

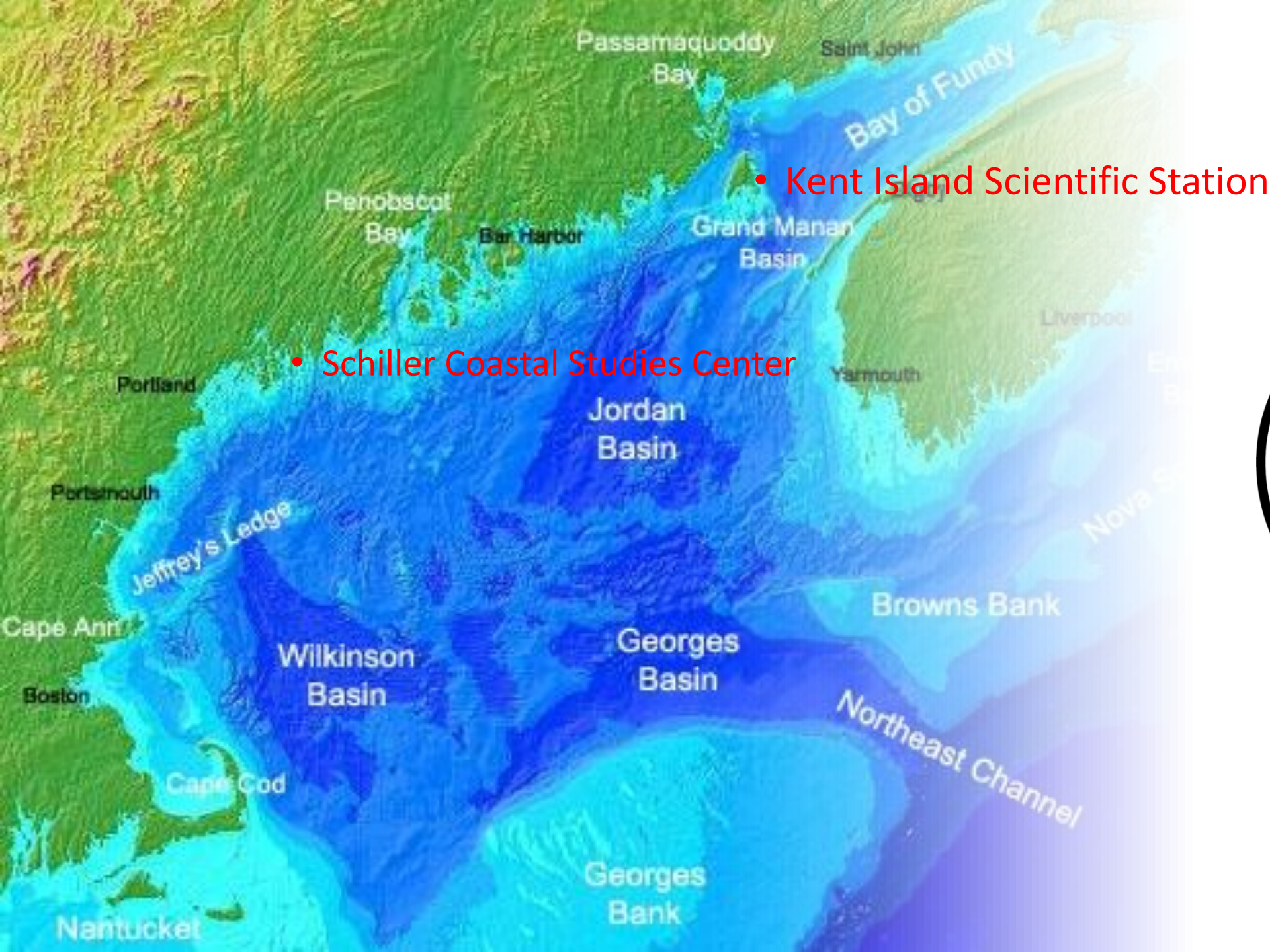


National Association of Marine Laboratories
Biennial Meeting
Schiller Coastal Studies Center
Oct. 5 - 6, 2023

An aerial photograph of a coastal inlet. A road runs along the left side of the inlet, which is surrounded by dense forest. The water is a mix of blue and grey, indicating some sediment or shallow areas. The background shows the open ocean under a clear sky.

Land Acknowledgement

Bowdoin College and the Schiller Coastal Studies Center is located on the ancestral homelands of the Wabanaki. Today the Wabanaki include the Abenaki, Maliseet, Mi'kmaq, Passamaquoddy, and Penobscot nations, who have deep and enduring relationships with Maine's lands and waterways. We acknowledge the painful legacy of the region's colonial history and commit to better understanding it, while also celebrating the vibrancy of Native American cultures and working to build a more inclusive community.



History of the site – 118 Acres, 2.5 miles of coast on Harpswell Sound in Casco Bay



Coastal Farm worked by two families, Wyer and Hansen

Property gifted by the Thalheimer family to Bowdoin College

\$10 million gift from the Schiller Family transforms the site into the Schiller Coastal Studies Center



Summer home, Thalheimer family

\$3 million gift from Leon Gorman seeds the initial development of the Coastal Studies Center